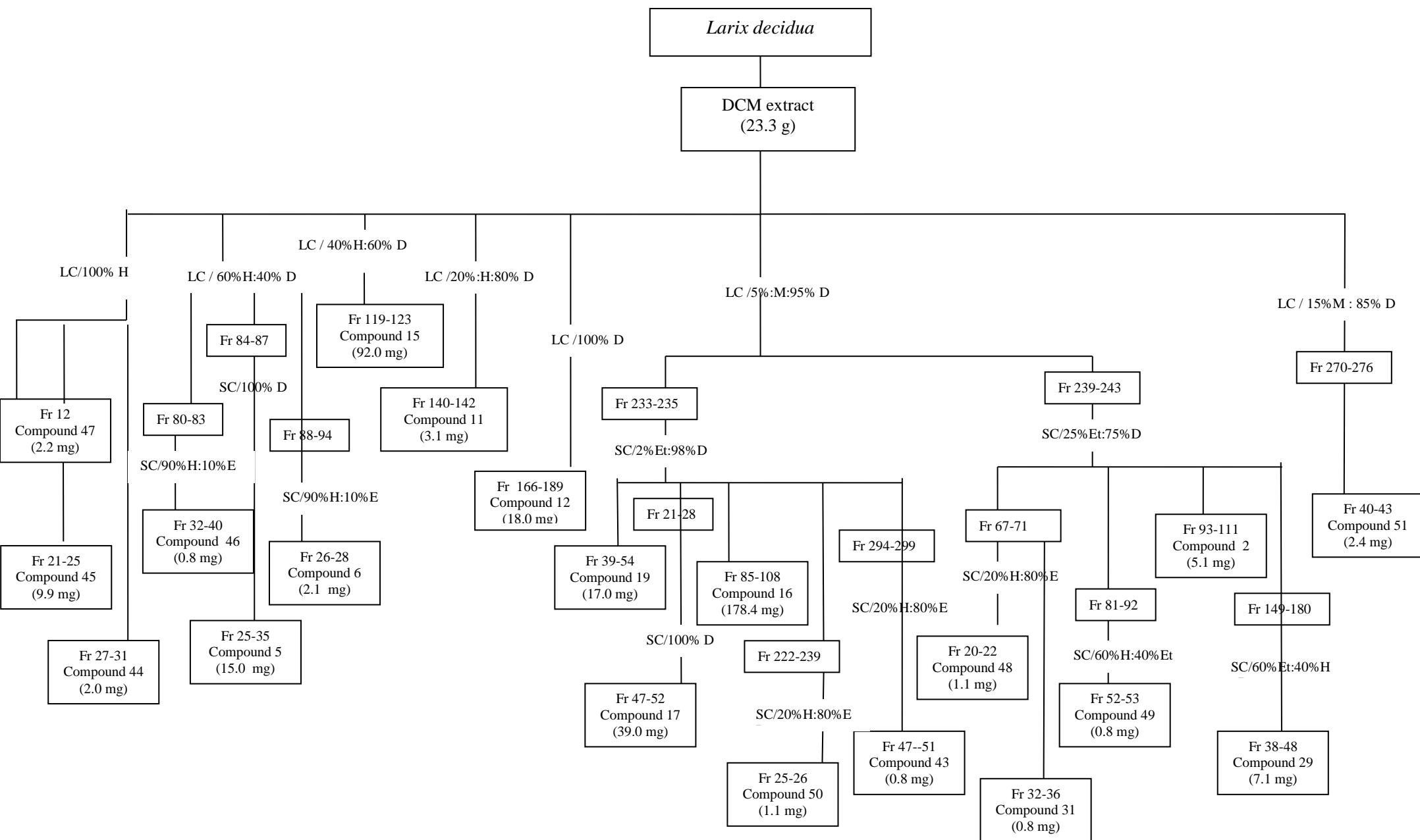


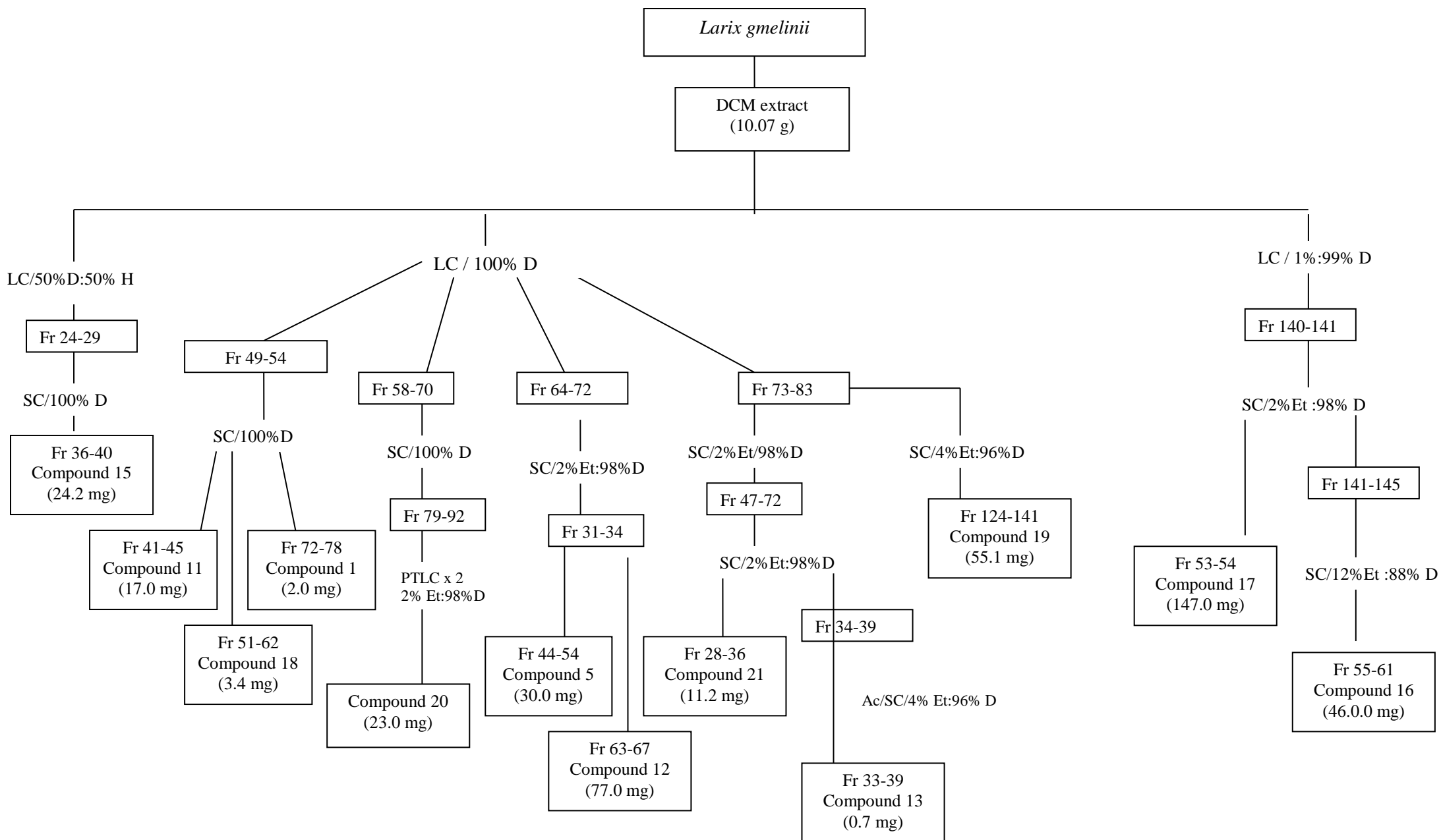
## S2 Detailed isolation schemes of pure compounds.

Abbreviation	Meaning
SC	Small column-silica, 1 cm diameter, 2 cm <sup>3</sup> fractions collected
SC-Sephadex	Small column-sephedex, 1cm diameter, 2 cm <sup>3</sup> fractions collected
S	Semi size column, 35 cm <sup>3</sup> fractions collected
LC	Large column-silica, 5 cm diameter, 75 cm <sup>3</sup> fractions collected
PTLC	Preparative TLC
D	DCM
M	MeOH
Et	Ethyl acetate
E	Diethyl ether
H	Hexane
Ac	Acetylated

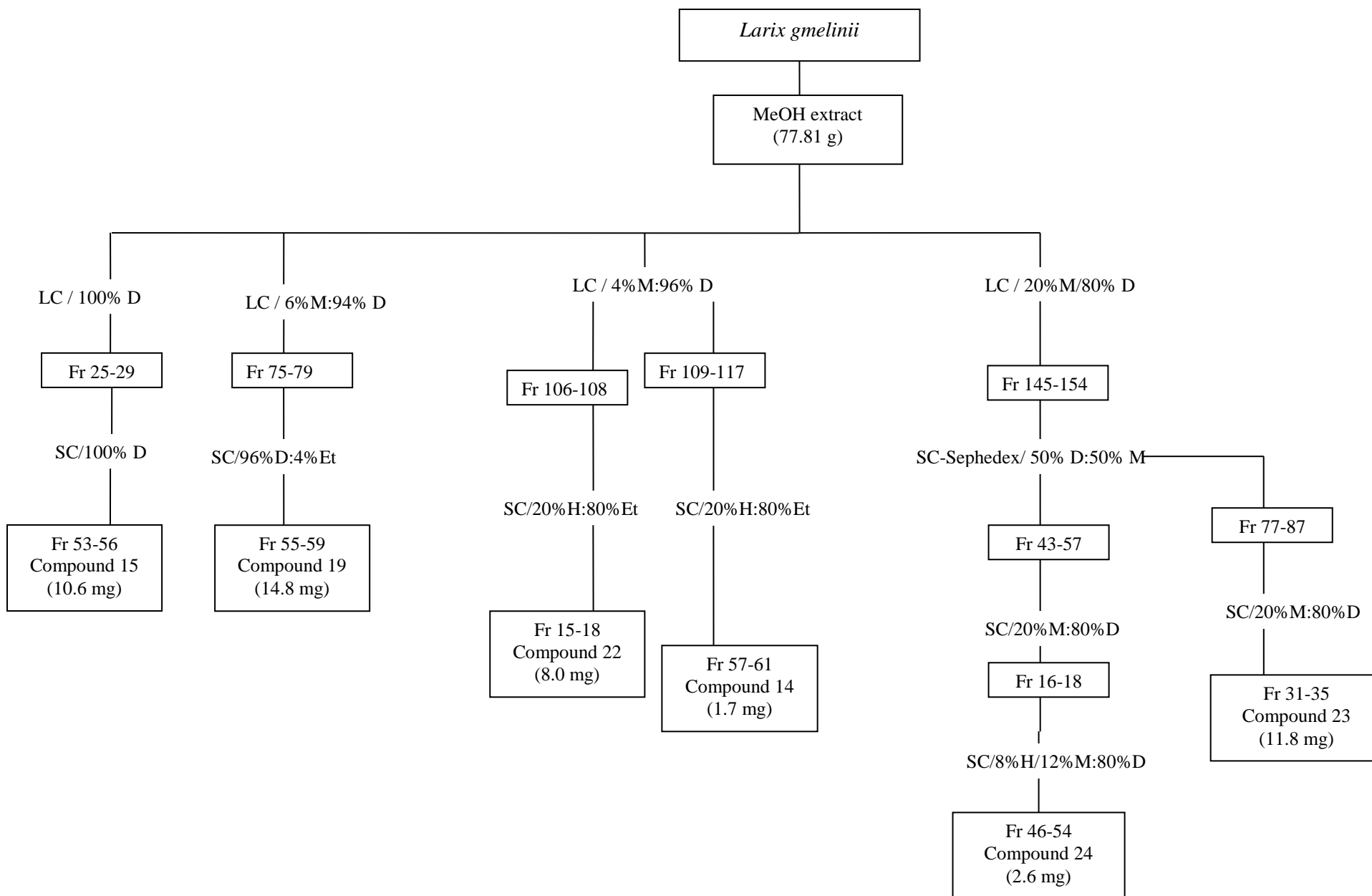
**S 2.1:** Flow chart showing of isolation of compounds from the dichloromethane extract of *L. decidua*



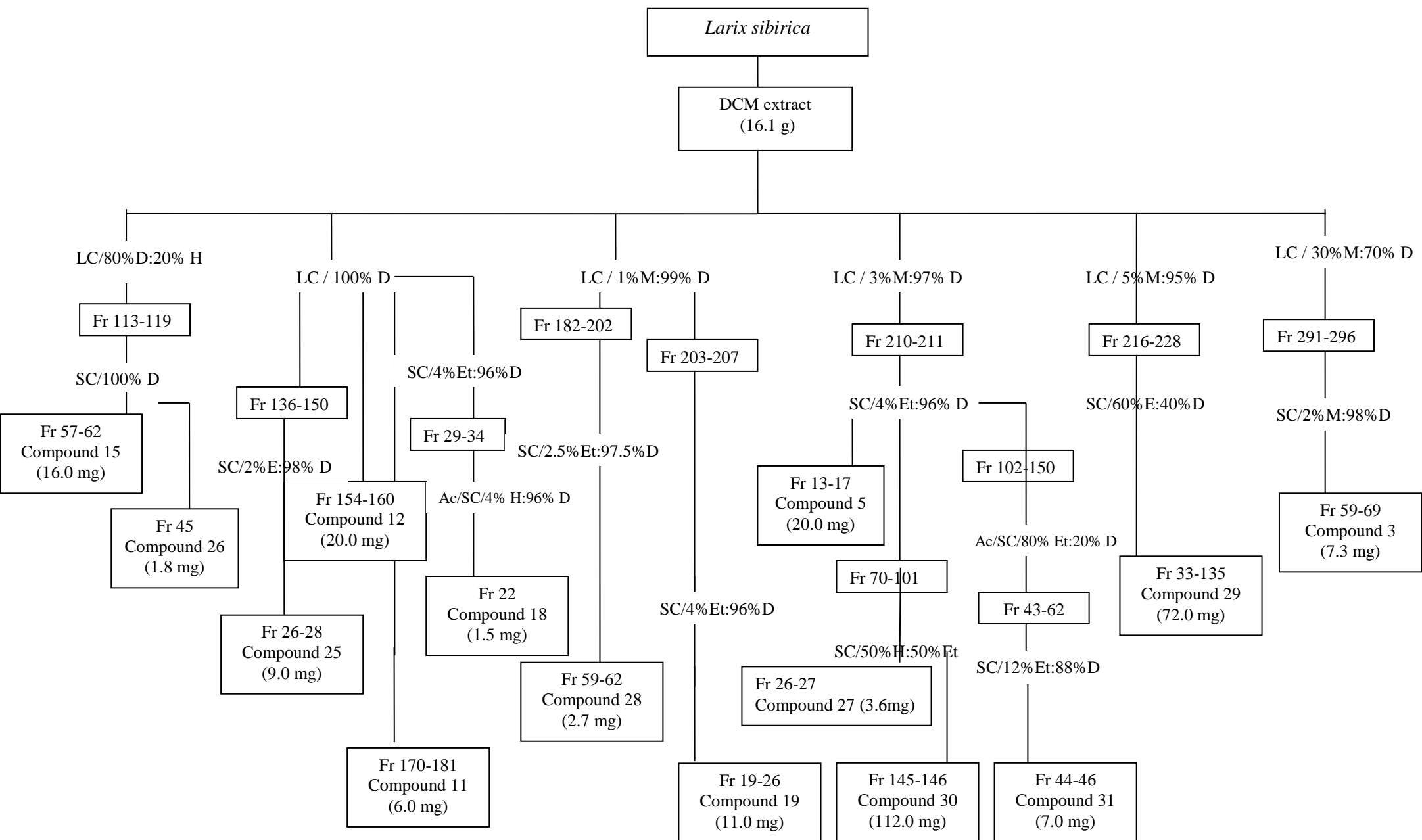
**S 2.2:** Flow chart showing of isolation of compounds from the dichloromethane extract of *L. gmelinii*



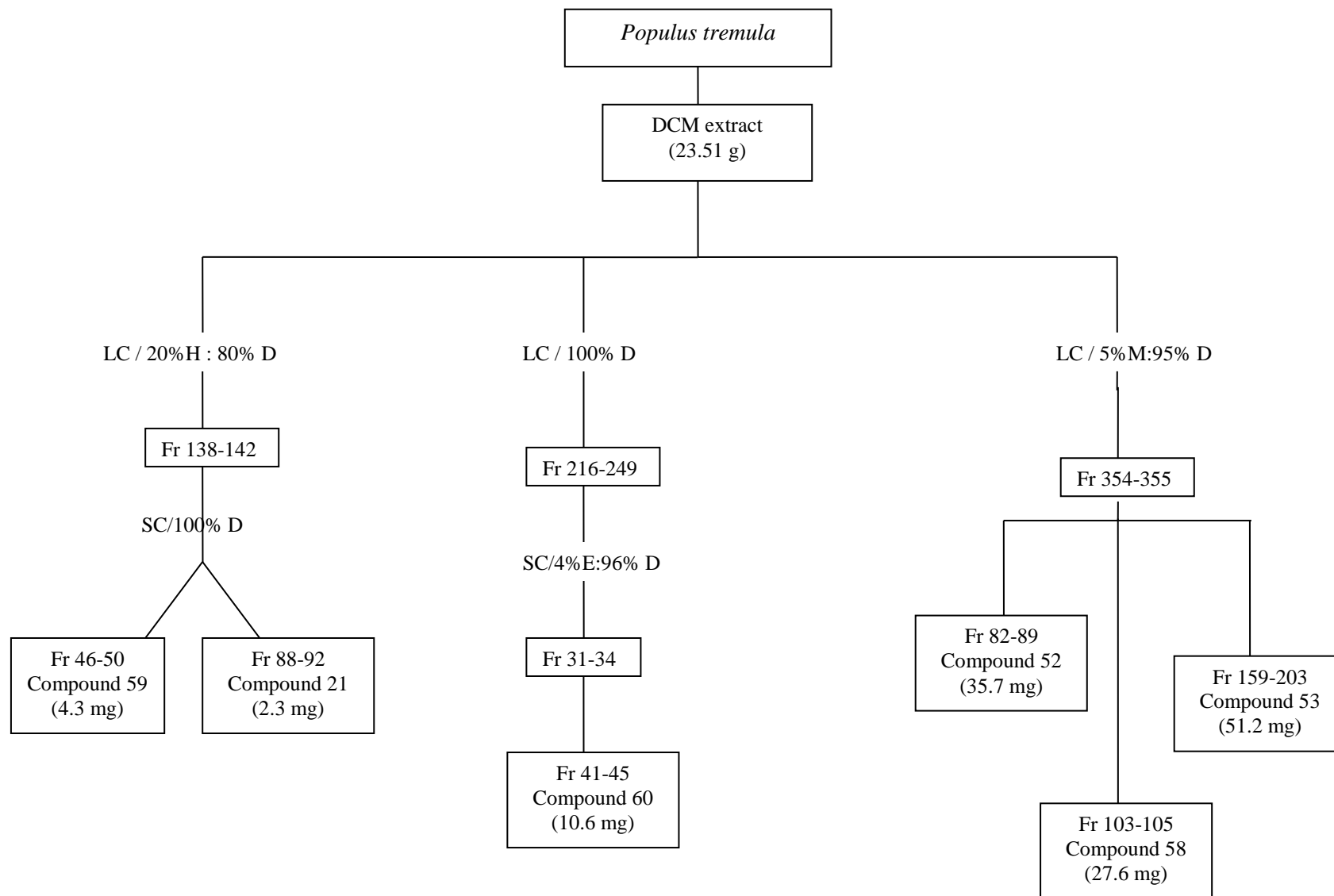
**S 2.3:** Flow chart showing of isolation of compounds from the methanol extract of *L. gmelinii*



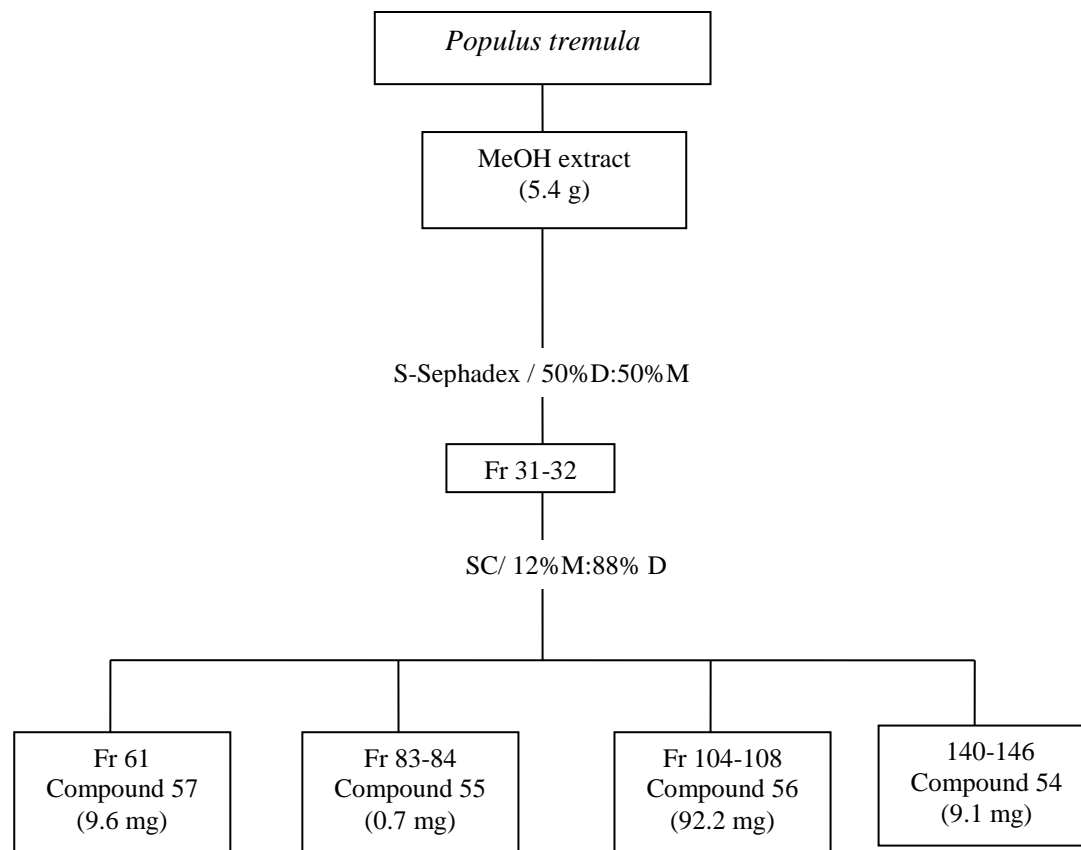
**S 2.4:** Flow chart showing of isolation of compounds from the dichloromethane extract of *L. sibirica*



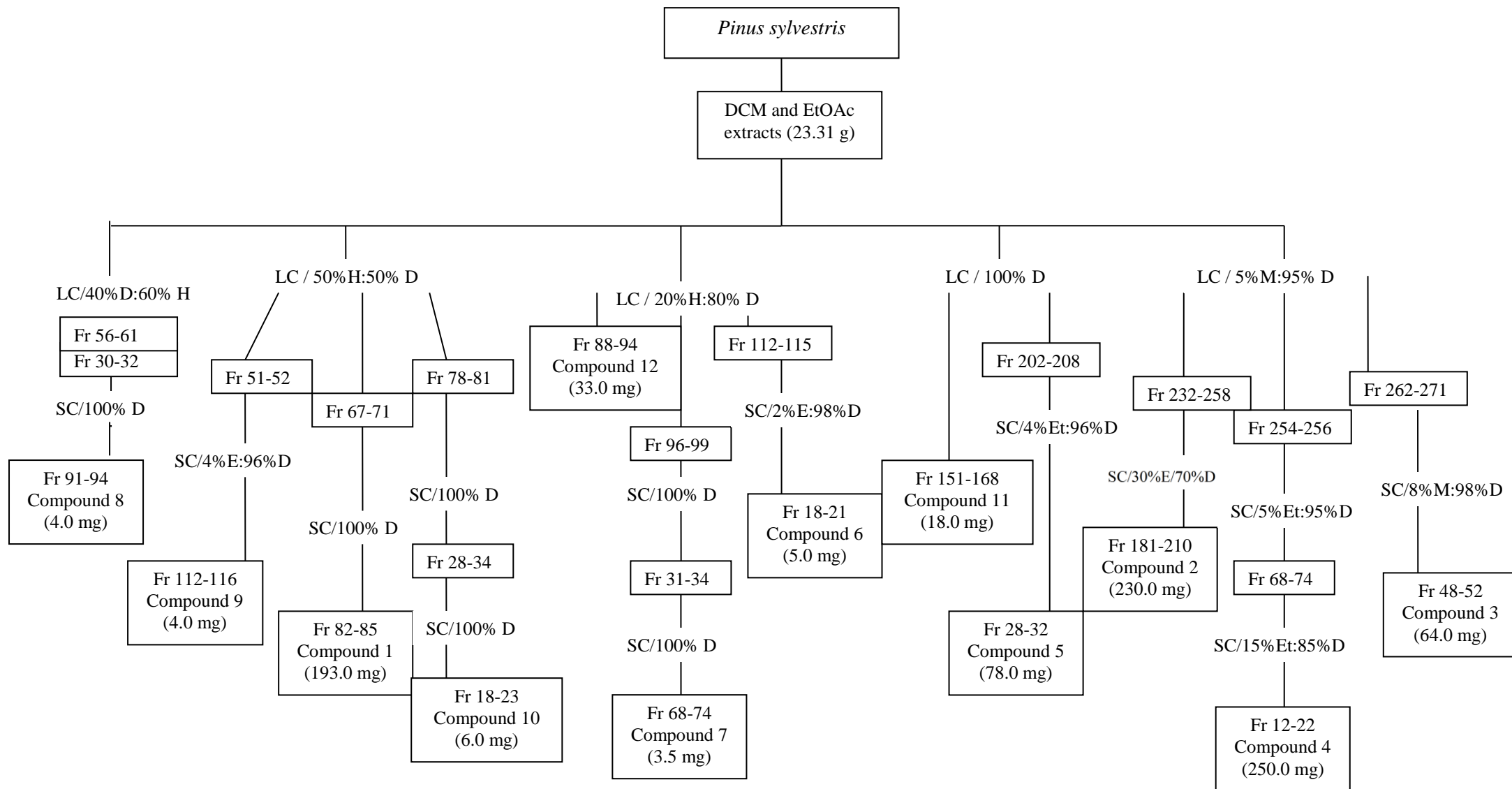
**S2.5:** Flow chart showing of isolation of compounds from the dichloromethane extract of *P. tremula*



**S 2.6:** Flow chart showing of isolation of compounds from the methanol extract of *P. tremula*



S 2.7: Flow chart showing of isolation of compounds from *Pinus sylvestris*





S 2.8: Flow chart showing of isolation of compounds from *Abies nephrolepis*

